

# MC20

ELECTRIC BATTERY OPERATED CRANE  
MAX CAPACITY 2 t



## Pick&Carry Cranes

Edition 01/2016  
© 2016 JMG Cranes srl All rights reserved



JMG Cranes s.r.l. a socio unico  
"Società sottoposta ad attività di direzione e coordinamento di Compart Italia srl"

Sede Legale: Via Dante, 15 - 26100 CREMONA | Uffici e stabilimento: Via Sito Nuovo, 14 - 29010 Sarmato - PC - Italy  
C.F. e p.iva 05896090965 | Capitale Sociale Euro 84.000,00 i.v.  
T +39 0523 8486 | F. +39 0523 848000 | E. info@jmgcranes.com | www.jmgcranes.com





# MC20 2t

DRIVING:	Rear by a 2.6kW 24V AC electric motor controlled by inverter for the continuous control of movements and for crane safety, insulation Class H
BATTERY:	24V 420Ah. Battery meter indicator on the dashboard. Autonomy: 8 working hours
BRAKES:	Automatic braking system on all wheels
FRAME:	Fabricated from preformed and welded quality steel plate with built-in counterweight
WHEELS:	Front nr. 2 superelastic 18x7-8" Rear nr. 1 rubber 255/80
BOOM:	4 sections boom (1 fixed, 2 hydraulically telescoping complete with manual extension) fabricated from preformed and welded quality steel, sequentially telescoping by hydraulic cylinder, fitted with wear pads. Boom angle 60°/-15°
HYDRAULIC SYSTEM:	Powered by a silenced gear pump (3kW 24V DC), insulation class H. Actuators controlled by a lever distributor for the millimetric managing of the boom movements. Filter and safety valve. 22 MPa working pressure
STEERING:	Operated by 180° steering helm, complete with reversing safety device
L.M.I.:	Electronic load moment indicator system, complying to CE safety standards, complete with display indicating: load lifted, maximum admitted load, tilting percentage, operating radius, angle, outreach and complete with warning lights of the operating status
WEIGHT:	Kg. 2000
OPTIONS ON REQUEST:	Fully hydraulic boom, hydraulic winch, manual or hydraulic jib, man basket, chain hoist, fork attachment, on board battery charger, watering system for battery, ATEX conversions, customer colour, non-marking tires
CRANE CLASSIFICATION ACCORDING TO UNI ISO 4301-1:	A3
EU STANDARDS CE:	2006/42 CE MD - 2004/108 CE EMC - 2006/95 CE LVD - 2000/14 and subsequent modifications
REFERENCE STANDARDS:	EN 13000: 2010 UNI ISO 4301- 2:2011 and subsequent modifications



COMPACT DIMENSIONS



TILLER WITH BOOM AND WINCH LEVER CONTROLS

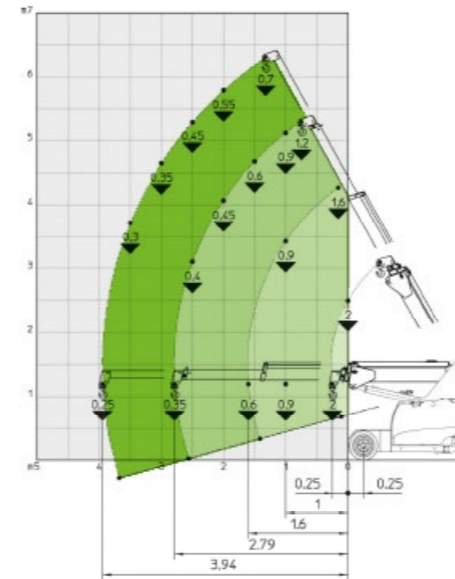


TILLER WITH RADIO REMOTE CONTROL (AS OPTION) FOR BOOM AND WINCH MOVEMENTS



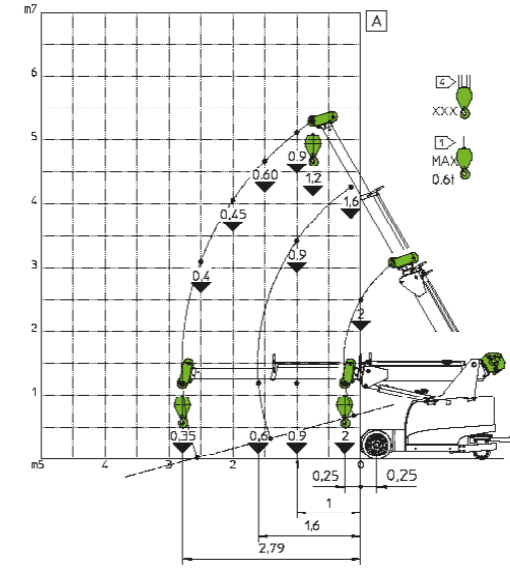
DASHBOARD

## BASIC CRANE LOAD CHART

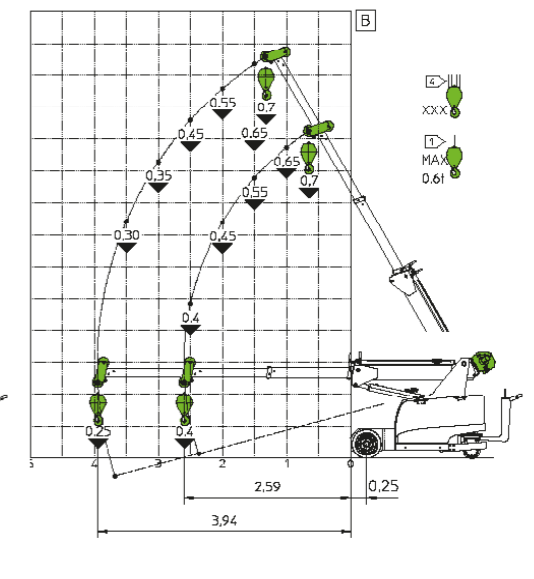


## LOAD CHART HYDRAULIC WINCH

HYDRAULIC BOOM

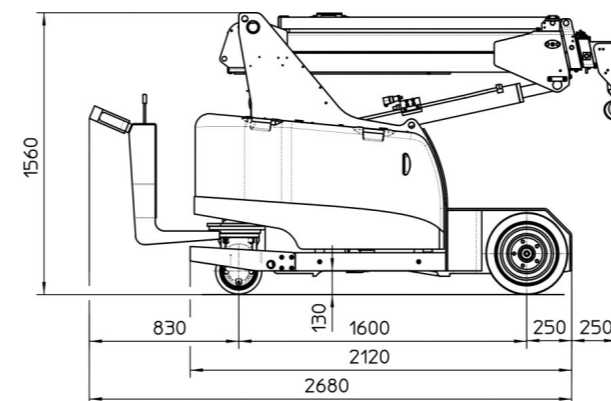


MANUAL EXTENSION



m - t

## DIMENSIONS



mm

